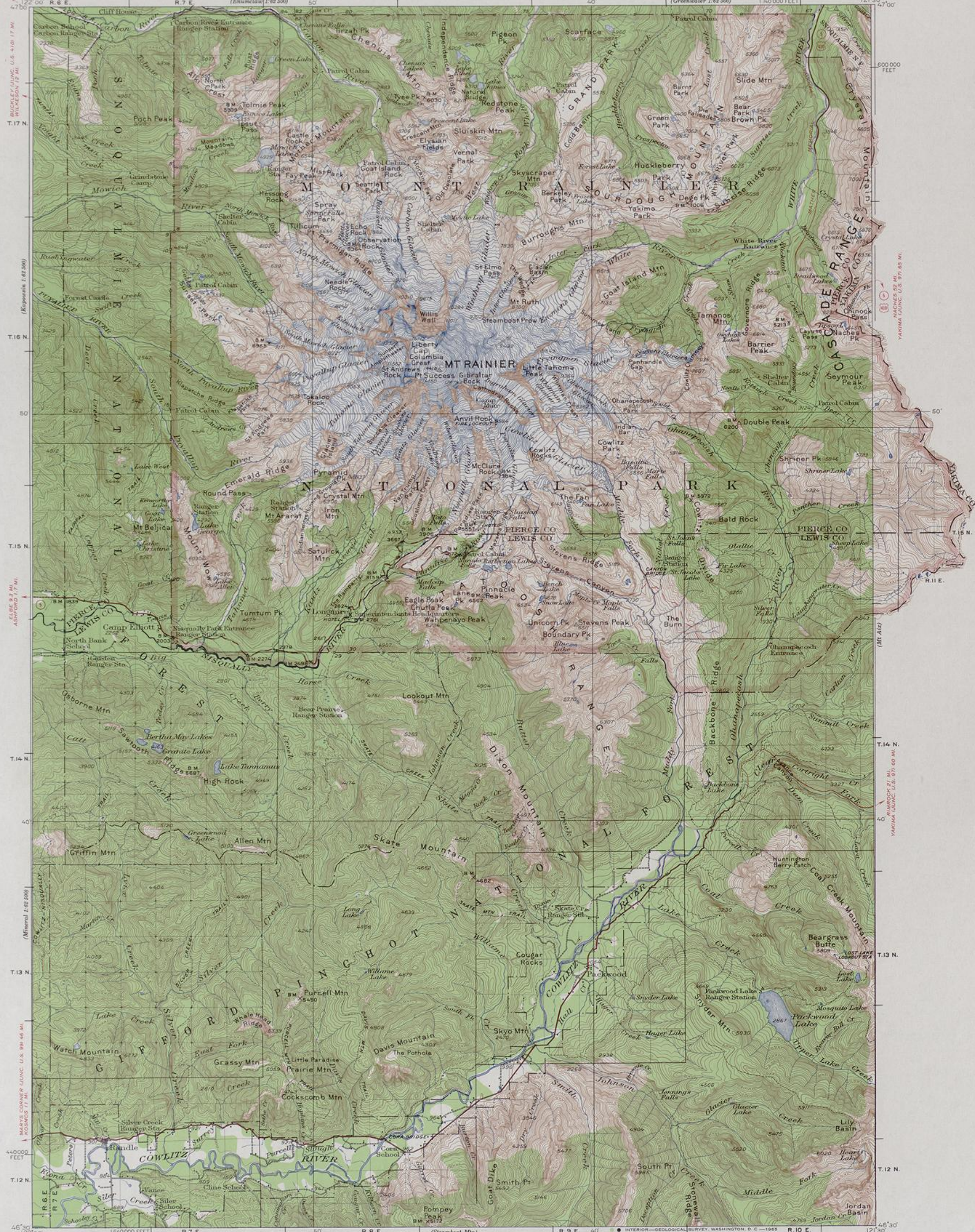


UNITED STATES
DEPARTMENT OF THE INTERIOR
GEOLOGICAL SURVEY

MT. RAINIER QUADRANGLE
WASHINGTON



Topography by C.P. McKinley and W.R. Chenoweth
Control in part by U.S. Coast and Geodetic Survey
Surveyed in 1924
Park area reduced from map of
Mt. Rainier National Park

ROAD CLASSIFICATION
Heavy-duty ——— Light-duty ———
Medium-duty ——— Unimproved dirt ———
U.S. Route ——— State Route ———

APPROXIMATE MEAN
DECLINATION, 1924

SCALE 1:125,000
0 1 2 3 4 5 6 7 8 9 MILES
0 5000 10000 15000 20000 25000 30000 35000 FEET
0 1 2 3 4 5 6 7 8 9 KILOMETERS

CONTOUR INTERVAL 100 FEET
DATUM IS MEAN SEA LEVEL

Interior—GEOLOGICAL SURVEY, WASHINGTON, D.C.—1965
POLYCONIC PROJECTION. To place on 1927 North American datum
move projection lines 115 feet north and 85 feet west
A map of the Mount Rainier National Park quadrangle,
scale 1:62,500, surveyed in 1913, is available
20,000 foot grid based on Washington (South)
rectangular coordinate system

DIAGRAM OF TOWNSHIP

6	5	4	3	2	1
7	8	9	10	11	12
13	14	15	16	17	18
19	20	21	22	23	24
25	26	27	28	29	30
31	32	33	34	35	36

MT. RAINIER, WASH.
N4630-W12130/30
1924

FOR SALE BY U.S. GEOLOGICAL SURVEY, DENVER 25, COLORADO OR WASHINGTON 25, D.C.
A FOLDER DESCRIBING TOPOGRAPHIC MAPS AND SYMBOLS IS AVAILABLE ON REQUEST